

KBT Antennas

www.kenbotong.com



ROHS COMPLIANT

FC CE

◆ VHF/UHF 天线

VHF/UHF Antennas

◆ CMMB/DTMB/DVB-T/TETRA 天线

CMMB/DTMB/DVB-T/TETRA Antennas

◆ 短波天线、宽带超短波天线、GPS 天线

HF Antennas, Super Broadband Antennas, GPS Antennas

◆ 无源器件

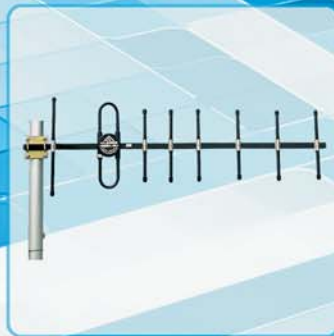
Passive Components

◆ 天线附件

Antenna Accessories

◆ 仪表仪器

Instruments



健博通电讯实业有限公司
Kenbotong Communication Ltd.

佛山市健博通电讯实业有限公司创建于1995年，现已发展成为亚洲知名的天线设计、制造和解决方案提供商之一。

公司总部健博通科技园位于佛山市禅城区高新技术开发区，占地面积60亩，建筑面积55,000平方米。公司现有大学学历以上的专业人员占职工总人数的45%；通过ISO9001:2008质量管理体系认证和ISO14001:2004环境管理体系认证。

公司主要生产3G、LTE、McWILL、CDMA、GSM和PCS基站天线、直放站天线；室内分布天线；美化天线；VHF/UHF天线；CMMB/DTMB/DVB-T天线；数字集群通信天线；2.4/4.9/5.1/5.5/5.8GHz WLAN、WiFi天线；MIMO天线；CPE天线；GPS天线；1.5/2.6/3.5GHz WiMAX、固定无线接入天线；微波天线以及功分器、耦合器、避雷器等。

我公司是国家级高新技术企业，“广东省著名商标”企业，所有产品均为自主研发和生产。我们的多款天线成功应用于“神舟五号”和“神舟六号”返回舱地面搜救系统。公司与信息产业部第54研究所、第七研究所、西安电子科技大学、成都电子科技大学和华南理工大学等科研单位及高等院校合作，研究开发出大批高科技含量的新型产品，填补了国内市场的空白。

我公司的主要生产和检测设备有天线自动生产线、大型微波暗室、原装美国HP/Agilent矢量网络分析仪、SUMMITEK互调测试仪、Agilent频谱分析仪、天线远场自动测试系统、环境试验设备、日本RoHS检测仪和同轴电缆剥线机等。

公司在美国、香港、北京、上海等地共设有17个分公司。产品主要销售到中国移动、中国电信、中国联通、华为、中兴和京信等通信运营商及通信设备制造商。在国际贸易方面，大量天线产品出口北美、东南亚、欧洲、南美、中东、非洲以及大洋洲等地区。我公司是获得摩托罗拉公司认证的国内天线企业之一（供应商认证号码：0857141）。

健博通公司将秉承“诚信铸就品牌、品质吸引客户、服务编织未来”的经营理念，为国内外客户提供更加优质的产品和完善的服务。



Kenbotong Communication Ltd.

Established in 1985, Foshan, Guangdong, China, Kenbotong Communication Ltd. (KBT) is one of the famous communication antenna designers, manufacturers and solutions suppliers in Asia. Our main office, Kenbotong Technology Park is located in Foshan's high-tech region, occupies over 55,000 square meters.

Over 45% of our current staffs have bachelor or postgraduate degrees. KBT has achieved ISO9001:2008 Quality Management System and ISO14001:2004 Environmental Management System Certification.

KBT's main products include 2.4/4.9/5.1/5.5/5.8GHz WLAN, WiFi antennas; MIMO antennas; CPE antennas; GPS antennas; 1.5/2.6/3.5GHz WiMAX, fixed wireless access antennas; 3G, LTE, CDMA, GSM, PCS and McWILL base station antennas; repeater antennas; indoor distributed antennas; decorative antennas; VHF/UHF antennas; CMMB/DTMB/DVB-T antennas; Digital trunking communication antennas; microwave antennas and passive components such as splitter, coupler, surge lightning protector etc.

KBT is the State-level High-tech Enterprise and Guangdong Famous Trademark corporation. All of the antenna products from KBT are designed and developed by our experienced engineers. Our antennas had been applied to Chinese National Manned Space Program.

KBT's main production and testing equipment include automatic antenna production line, large-sized microwave chamber, HP/Agilent vector network analyzer, SUMMITEK intermodulation testing instrument, Agilent frequency spectrum analyzer, antenna far field automatic measurement system, environmental testing equipment, RoHS analyzer and coaxial cable stripper machine.

17 branch offices have been established in major cities home and abroad, such as Hong Kong, Beijing, Shanghai and San Jose of California. KBT's customers in China include all the telecom giants such as China Mobile, China Telecom, China Unicom, Huawei Technologies, ZTE Corporation, Comba and many others. KBT exports very large quantity of antenna products daily to North America, Southeast Asia, Europe, South America, Middle East, Africa and Oceania. In fact, Motorola considers us their qualified antenna supplier in mainland China. (Supplier Certification No. 0857141)

Based on our corporate philosophy of Credibility Makes Brand, Quality Attracts Customers, Service Makes the Future, our goal is to provide the best value and highest quality products and sales support to our valued customers worldwide.



生产现场
Production



大型微波暗室
Large-Sized Microwave Chamber

VHF/UHF频段集中了大量的应用系统：400MHz/450MHz SCDMA系统、民用集群通信系统、公安集群通信系统、数字电视广播系统、调频广播、测绘、水文/环境检测等等，随着模拟电视系统的逐渐退出市场，腾出来的空余频率也吸引着大量的新兴系统的进驻。如McWILL系统，LTE也在往700MHz频段扩展。

健博通在这个传统频带内积累了20余年的经验，上百种产品线、数以千计的产品，提供了丰富的选择。

我们的产品线：

- ◆ VHF150MHz频段：环阵天线、全向玻璃钢天线、八木天线（阵）及车载台天线；
- ◆ VHF230/280MHz频段：环阵天线、全向玻璃钢天线、八木天线（阵）及车载台天线；
- ◆ UHF350MHz频段：环阵天线、全向玻璃钢天线、八木天线（阵）及车载台天线；
- ◆ UHF400MHz频段：环阵天线、全向玻璃钢天线、八木天线、车载台天线、智能天线阵、远程终端八木天线、室内终端天线；
- ◆ UHF450MHz频段：环阵天线、全向玻璃钢天线、八木天线、车载台天线、智能天线阵、远程终端八木天线、室内终端天线；
- ◆ CMMB/DTMB/DVB-T 470-806MHz频段：全向玻璃钢天线、八木天线、室内分布天线、板状天线；
- ◆ 其他特殊天线产品及无源器件产品。

Introduction of products

VHF/UHF bands concentrate great amount of utility system, including: 400MHz/450MHz SCDMA system, civilian use trunking communication system, public security trunking communication system, digital television & broadcast system, FM broadcast, surveying and mapping, hydrology/environment measuring and so on. As the analog TV system withdrawing the market gradually, the frequency which is applied to it has been vacated, and this spare frequency can be used to large numbers of newly developing systems. For example, McWILL system, and LTE is been extending its frequency to 700MHz as well.

Kenbotong has over 20 years experience in this traditional frequency range, hundreds of types of product line, and thousands of products which can offer you varied choices.

Our product lines:

- ◆ VHF150MHz: Folded Dipoles Antenna, Fiberglass Omni Antenna, Yagi Antenna (array), and Mobile Antenna;
- ◆ VHF230/280MHz: Folded Dipoles Antenna, Fiberglass Omni Antenna, Yagi Antenna (array), and Mobile Antenna;
- ◆ UHF350MHz: Folded Dipoles Antenna, Fiberglass Omni Antenna, Yagi Antenna (array), and Mobile Antenna;
- ◆ UHF400MHz: Folded Dipoles Antenna, Fiberglass Omni Antenna, Yagi Antenna, Mobile Antenna, Smart Antenna Array, Remote Terminal (RT) Yagi Antenna, and Indoor Terminal Antenna;
- ◆ UHF450MHz: Folded Dipoles Antenna, Fiber Omni Antenna, Yagi Antenna, Mobile Antenna, Smart Antenna Array, Remote Terminal (RT) Yagi Antenna, and Indoor Terminal Antenna;
- ◆ CMMB/DTMB/DVB-T 470-806MHz: Fiberglass Omni Antenna, Yagi Antenna, Indoor Coverage Antenna, and Panel Antenna;
- ◆ We also produce some other special antennas and passive components as well.

目录 Contents

类别 Category	页码 Page Number
VHF 150MHz	1-5
VHF 230&280MHz	6-7
UHF 350MHz	8-10
UHF 400MHz	11-17
UHF 450MHz	18-19
CMMB/DTMB/DVB-T/TETRA 天线 CMMB/DTMB/DVB-T/TETRA Antennas	20-25
HF/VHF/UHF 宽带天线 HF/VHF/UHF Broadband Antennas	26
GPS卫星接收天线 GPS Satellite Receiving Antennas	27
无源器件 Passive Components	28-29
假负载/避雷器 Dummy Loads/Surge Protectors	30
功率表/接收机/频率计 SWR Power Meters/Receiver/Freuency Meter	31
车台天线座/夹码/线夹 Magnet Mount/Bracket/Clamp	32
接头/转换头 Connectors/Adaptors	33

声明:

所有图片样式、颜色仅供参考,产品以实物为准;
健博通电讯实业有限公司®有权修改其产品或产品技术细则,无需提前通告;
健博通电讯实业有限公司®保留对本手册内容的所有解释权。

STATEMENT:

All the pictures are for reference only, please kindly consult with the real products.

Kenbotong Communication Ltd.® Reserves all rights to change any product's technical specifications and descriptions without notice.

Kenbotong Communication Ltd.® Reserves all rights to explain the content of this handbook.



TQJ-150I



TQJ-150IA



TQJ-150IS



TQJ-150II



TQJ-150IIA



TQJ-150IIA-1

类别 Category	四环阵天线 FFDA			八环阵天线 EFDA		蝶形八环阵天线 PEFDA
型号 Model	TQJ-150I	TQJ-150IA	TQJ-150IS	TQJ-150II	TQJ-150IIA	TQJ-150IIA-1
频率范围 Frequency Range-MHz	134~173					
带宽 Bandwidth-MHz	8					
增益 Gain-dBi	全向Omni 8.8 定向Directional 11.8	全向Omni 9 定向Directional 12	全向Omni 8.8 定向Directional 11.8	全向Omni 11.8 定向Directional 14.8	全向Omni 12 定向Directional 15	10
垂直面波瓣宽度 Vertical Beamwidth-°	13.5	13	13.5	6.8	6.5	10
电压驻波比 VSWR	≤1.5 (频点 Center Frequency ≤1.2)					
标称阻抗 Nominal Impedance-Ω	50					
极化方式 Polarization	垂直 Vertical					
最大功率 Maximum Power-W	500					
长度 Length-m	5	6.7	5	10	13	6.7
重量 Weight-kg	9	11	9	30	35	30
抗风强度 Rated Wind Velocity-m/s	60					
接头型号 Connector	SL16或N座 UHF or N female					
备注 Remarks	分上下两段 Separated into two parts			分四段 Separated into four parts		分上下两段,水平面上 辐射性能特优。 Separated into two parts. The radiation stability on a horizontal plane is excellent.

注(Note):

①TQJ-150I及TQJ-150II用普通铝合金管制作,单层铝管,配U形夹码。

TQJ-150I and TQJ-150II are made from normal aluminum-alloy pipes. They are single layer aluminum pipes, and match with U-shape bracket.

②TQJ-150IA及TQJ-150IIA用高强度铝镁合金管制作,双层铝管,配蝶形大夹码,抗风及抗腐蚀性性能特优。

TQJ-150IA and TQJ-150IIA are made from high strength aluminum-magnesium alloy pipes. They are double layer aluminum pipes, and match with papilionaceous large bracket. Anti-wind capability and corrosion resistant are excellent.



TQJ-150B

TQJ-150C

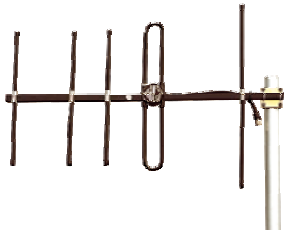
TQJ-150N

TQJ-150M
TQJ-150MB

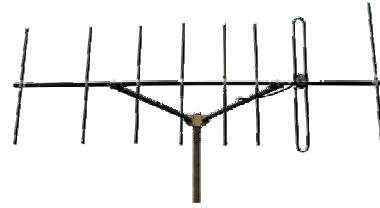
TQJ-150D

TQJ-150F

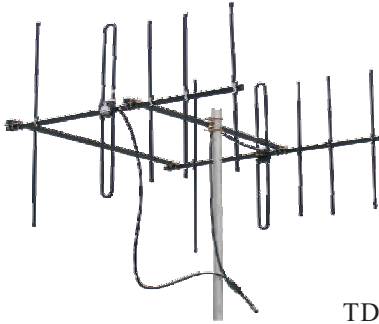
类别 Category	全向天线 Omni Antennas						
型号 Model	TQJ-150B	TQJ-150C	TQJ-150N	TQJ-150M	TQJ-150MB	TQJ-150D	TQJ-150F
频率范围 Frequency Range-MHz	134~173						
带宽 Bandwidth-MHz	8	25	8	8	2.5	8	6
增益 Gain-dBi	3	3.2	6.5	8.5	8.7	3.65	6.5
垂直面波瓣宽度 Vertical Beamwidth-°	62	60	25	14.5	13.5	58	25
电压驻波比 VSWR	≤1.5		≤1.5 (频点 Center Frequency ≤1.2)			≤1.5	
标称阻抗 Nominal Impedance-Ω	50						
极化方式 Polarization	垂直 Vertical						
最大功率 Maximum Power-W	100	50	150		300	100	
长度 Length-m	1.2	1.8	2.9	4.7	5.7	1.5	3.3
重量 Weight-kg	1	2	2.8	3.5	5	2	3
抗风强度 Rated Wind Velocity-m/s	60						
接头型号 Connector	SL16或N座 UHF or N female					SL16座 UHF female	
备注 Remarks	玻璃钢 Fiberglass	玻璃钢 宽频带 Fiberglass Board band	玻璃钢 Fiberglass	玻璃钢 分上下两段 Fiberglass Separated into two parts		铝合金 Aluminum alloy	铝合金 分上下两段 Aluminum alloy Separated into two parts



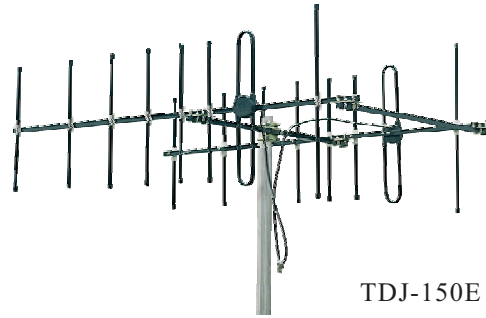
TDJ-150B



TDJ-150C



TDJ-150D



TDJ-150E

类别 Category	八木定向天线 Yagi Antennas			
型号 Model	TDJ-150B	TDJ-150C	TDJ-150D	TDJ-150E
单元数 Elements	5	8	2排5单元 2 rows 5 elements	2排8单元 2 rows 8 elements
频率范围 Frequency Range-MHz	134~173			
带宽 Bandwidth-MHz	10			
增益 Gain-dBi	9	11.2	12	14.5
垂直面波瓣宽度 Vertical Beamwidth-°	48	40	48	40
水平面波瓣宽度 Horizontal Beamwidth-°	54	44	28	20
前后比 F/B Ratio-dB	14	16	14	16
电压驻波比 VSWR	≤1.5			
标称阻抗 Nominal Impedance-Ω	50			
极化方式 Polarization	垂直或水平 Vertical or Horizontal		垂直 Vertical	
最大功率 Maximum Power-W	100			
长度 Length-m	1.2	2	1.2	2
重量 Weight-kg	2.4	3.2	5	7
抗风强度 Rated Wind Velocity-m/s	60			
接头型号 Connector	SL16或N座 UHF or N female			



TQC-150AII

TQC-150S

TQC-150I

TQC-150CI

TQC-150CII

TQC-150DI

TQC-150DII

类别 Category	车台天线 Mobile Antennas						
型号 Model	TQC-150AII	TQC-150S	TQC-150I	TQC-150CI	TQC-150CII	TQC-150DI	TQC-150DII
频率范围 Frequency Range-MHz	134~173						
带宽 Bandwidth-MHz	10	10	8	6	6	6	8
增益 Gain-dBi	2.15	2.15	3	3.5	3.5	3.65	3.65
电压驻波比 VSWR	≤1.5						
标称阻抗 Nominal Impedance-Ω	50						
极化方式 Polarization	垂直 Vertical						
最大功率 Maximum Power-W	100		50		100		
长度 Length-cm	50	50	80	110	110	130	130
重量 Weight-g	150	120	150	220	220		
抗风强度 Rated Wind Velocity-m/s	60						
接头型号 Connector	SL16头 UHF Male	/	/	SL16头 UHF Male			
备注 Remarks	底部弹簧防碰，配M90或M110磁吸座。 Bottom spring which can prevent collision. Matches with M90 or M110 magnetic mount.	配M80不锈钢磁吸座。 Matches with M80 stainless steel magnetic mount.	配M110大磁吸座。 Matches with M110 large magnetic mount.	配M110大磁吸座。 Matches with M110 large magnetic mount.	底部弹簧防碰，配M110大磁吸座。 Bottom spring which can prevent collision. Matches with M110 magnetic mount.	配M110大磁吸座。 Matches with M110 large magnetic mount.	底部弹簧防碰，配M110大磁吸座。 Bottom spring which can prevent collision. Matches with M110 magnetic mount.



TQX-150A



TQX-150F



TQX-150L

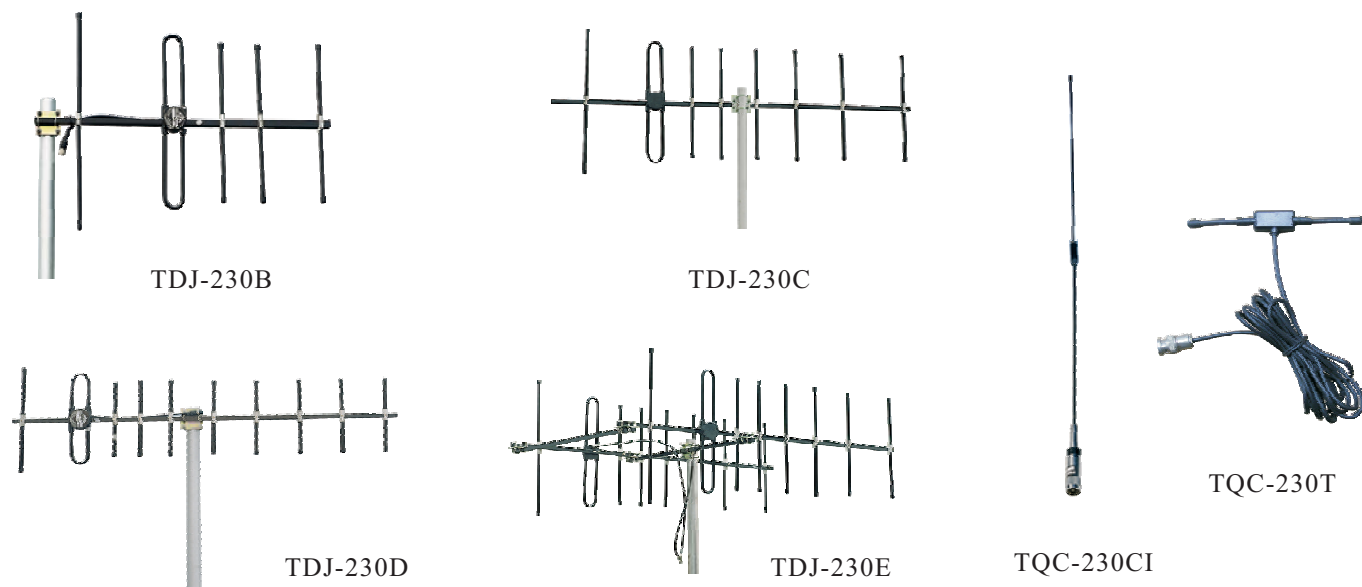


TQX-150MT



TQX-150S

类别 Category	终端天线 Terminal Antennas				
型号 Model	TQX-150A	TQX-150F	TQX-150L	TQX-150MT	TQX-150S
频率范围 Frequency Range-MHz	134~173				
带宽 Bandwidth-MHz	6	8			
增益 Gain-dBi	1.8	1.8	2	1.8	1.8
电压驻波比 VSWR	≤2.0				
标称阻抗 Nominal Impedance-Ω	50				
极化方式 Polarization	垂直 Vertical				
最大功率 Maximum Power-W	30				
长度 Length-cm	13	10	20	13	12
重量 Weight-g	45	20	30	50	50
接头型号 Connector	BNC或TNC(配TNC插头的, 在型号后加T) BNC or TNC (Matches with TNC male, add T after model)			STUD	SMA头 SMA male
备注 Remarks	螺旋型 Helicity	/			



类别 Category	八木定向天线 Yagi Antennas				车台天线 Mobile Antenna	汽车防盗天线 Vehicle Alarm Antenna
	5单元 5 elements	8单元 8 elements	10单元 10 elements	2排8单元 2 rows 8 elements		
型号 Model	TDJ-230B	TDJ-230C	TDJ-230D	TDJ-230E	TQC-230CI	TQC-230T
频率范围 Frequency Range-MHz	220~290					
带宽 Bandwidth-MHz	16				9	
增益 Gain-dBi	9	11.2	12	14	3.5	2
垂直面波瓣宽度 Vertical Beamwidth-°	48	40	36	40	/	/
水平面波瓣宽度 Horizontal Beamwidth-°	54	44	40	27	/	/
前后比 F/B Ratio-dB	14	16	18	18	/	/
电压驻波比 VSWR	≤1.5					
标称阻抗 Nominal Impedance-Ω	50					
极化方式 Polarization	垂直或水平 Vertical or Horizontal			垂直 Vertical	垂直 Vertical	
最大功率 Maximum Power-W	100				100	30
长度 Length-m	1	1.5	2	1.5	0.8	0.16
重量 Weight-kg	2	2.8	3	6	0.12	0.1
抗风强度 Rated Wind Velocity-m/s	60				/	/
接头型号 Connector	SL16或N座 UHF or N female				SL16头 UHF male	用户指定 Customization
备注 Remarks	/	/	/	/	配M110大磁吸座，引出电缆接头由用户指定。 Working with M110 magnetic mount, the connector of cable can be customized.	车玻璃上粘贴安装 Stick on the glass of vehical



TQJ-230B



TQJ-230C



TQJ-280IA



TQJ-280IIA



TQJ-280IIA-1

类别 Category	全向天线 Omni Antennas		四环阵天线 FFDA	八环阵天线 EFDA	蝶形八环阵天线 PEFDA
型号 Model	TQJ-230B	TQJ-230C	TQJ-280IA	TQJ-280IIA	TQJ-280IIA-1
频率范围 Frequency Range-MHz	220~290				
带宽 Bandwidth-MHz	9				
增益 Gain-dBi	6.5	8.5	全向Omni 9 定向Directional 12	全向Omni 12 定向Directional 15	10
垂直面波瓣宽度 Vertical Beamwidth-°	25	14.5	13	6.5	10.5
电压驻波比 VSWR	≤1.5 (频点 Center Frequency ≤1.2)				
标称阻抗 Nominal Impedance-Ω	50				
极化方式 Polarization	垂直 Vertical				
最大功率 Maximum Power-W	150		500		
长度 Length-m	2.6	4.4	3.6	7	3.6
重量 Weight-kg	2.5	3.5	11	20	12
抗风强度 Rated Wind Velocity-m/s	60				
接头型号 Connector	SL16或N座 UHF or N female				
备注 Remarks	玻璃钢 Fiberglass	玻璃钢 分上下两段 Fiberglass Separated into two parts	分上下两段 Separated into two parts	分四段 Separated into four parts	分上下两段 Separated into two parts

注(Note):

①TQJ-280I及TQJ-280II用普通铝合金管制作，单层铝管，配U形夹码。

TQJ-280I and TQJ-280II are made from normal aluminum-alloy pipes. They are single layer aluminum pipes, and match with U-shape bracket.

②TQJ-280IA及TQJ-280IIA用高强度铝镁合金管制作，双层铝管，配蝶形大夹码，抗风及抗腐蚀性性能特优。

TQJ-280IA and TQJ-280IIA are made from high strength aluminum-magnesium alloy pipes. They are double layer aluminum pipes, and match with papilionaceous large bracket. Anti-wind capability and corrosion resistant are excellent.



TQJ-350IA



TQJ-350IIA

TQJ-350B
TQJ-350BIIA

TQJ-350BI

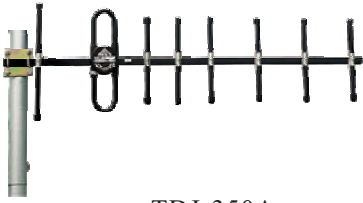


TQJ-350BIID



TQJ-350C

类别 Category	四环阵天线 FFDA	八环阵天线 EFDA	全向天线 Omni Antennas				
型号 Model	TQJ-350IA	TQJ-350IIA	TQJ-350B	TQJ-350BI	TQJ-350BIIA	TQJ-350BIID	TQJ-350C
频率范围 Frequency Range-MHz	330~390			330~400	370~387	330~390	
带宽 Bandwidth-MHz	16		14		15	17	14
增益 Gain-dBi	全向Omni 9 定向Directional 12	全向Omni 12 定向Directional 15	8.5	7.8	8.5	8 0.5	10.2
垂直面波瓣宽度 Vertical Beamwidth-°	13	6.5	14.5	17	14.5	14.5	10
电压驻波比 VSWR	≤1.5 (频点 Center Frequency ≤1.2)		≤1.5				
标称阻抗 Nominal Impedance-Ω	50						
极化方式 Polarization	垂直 Vertical						
最大功率 Maximum Power-W	500		100			250	100
长度 Length-m	3.2	6	2.6	1.7	2.6	2.8	4.7
重量 Weight-kg	10	20	2.5	2	3	8	3.5
抗风强度 Rated Wind Velocity-m/s	60						
接头型号 Connector	SL16或N座 UHF or N female						
备注 Remarks	/	分上下两段 Separated into two parts	玻璃钢 Fiberglass			玻璃钢, 大带宽, 高功率 Fiberglass, broadband, high power	玻璃钢 分上下两段 Separated into two parts



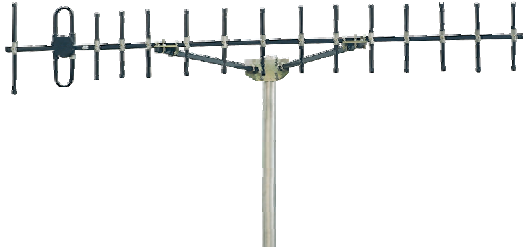
TDJ-350A



TDJ-350B



TDJ-350BKB



TDJ-350C



TDJ-350F

类别 Category	八木定向天线 Yagi Antennas				壁挂天线 Wall mount Antenna
	8单元 8 elements	12单元 12 elements	15单元 15 elements	2排15单元 2 rows 15 elements	
型号 Model	TDJ-350A	TDJ-350B	TDJ-350C	TDJ-350F	TDJ-350BKB
频率范围 Frequency Range-MHz	330~390				
带宽 Bandwidth-MHz	25				10
增益 Gain-dBi	11.2	12	13	15.7	5
垂直面波瓣宽度 Vertical Beamwidth-°	40	32	30	30	120
水平面波瓣宽度 Horizontal Beamwidth-°	44	36	30	14	85
前后比 F/B Ratio-dB	16	18	18	18	≥15
电压驻波比 VSWR	≤1.5				
标称阻抗 Nominal Impedance-Ω	50				
极化方式 Polarization	垂直或水平 Vertical or Horizontal			垂直 Vertical	垂直 Vertical
最大功率 Maximum Power-W	100				50
尺寸 Dimensions-m	1.5	1.8	2.1	2.1	0.24 0.23 0.05
重量 Weight-kg	1	1.2	1.4	3	0.35
抗风强度 Rated Wind Velocity-m/s	60				/
接头型号 Connector	SL16或N座 UHF or N female				N座 N female



TQC-350B



TQC-350CII



TQC-350DI



TQC-350DII



TQX-350B

TQC-350T



TQJ-350XTG

类别 Category	车台天线 Mobile Antennas				汽车防盗天线 Vehicle Alarm Antenna	终端天线 Terminal Antenna	全向吸顶天线 Ceiling mount Antenna
型号 Model	TQC-350B	TQC-350CII	TQC-350DI	TQC-350DII	TQC-350T	TQX-350B	TQJ-350XTG
频率范围 Frequency Range-MHz	330~390		300~390	330~390			
带宽 Bandwidth-MHz	15	16	16	10	15	15	10
增益 Gain-dBi	3.5	5	5.5	5.5	2	2	2
电压驻波比 VSWR	≤1.5					≤2.0	≤2.0
标称阻抗 Nominal Impedance-Ω	50						
极化方式 Polarization	垂直 Vertical						
最大功率 Maximum Power-W	100				30	25	50
尺寸 Dimensions-m	62	95	89	120	14	10	Φ18 9
重量 Weight-g	108	118	220	220	100	50	250
抗风强度 Rated Wind Velocity-m/s	60						
接头型号 Connector	SL16头 UHF Male				Q9或用户指定 BNC or Customization	STUD	N座 N female
备注 Remarks	配M90大磁 吸座。 Matches with M90 magnetic mount.	底部弹簧防碰， 配M110大磁 吸座。 Bottom spring which can prevent collision. Matches with M110 magnetic mount.	配M110大磁 吸座。 Matches with M110 magnetic mount.	底部弹簧防碰， 配M110大磁 吸座。 Bottom spring which can prevent collision. Matches with M110 magnetic mount.	车玻璃上 粘贴安装 Stick on the glass of vehical	/	紧固螺母安装 Fixed with nut



TQJ-400IA



TQJ-400IIA



TQJ-400A



TQJ-400B



TQJ-400C

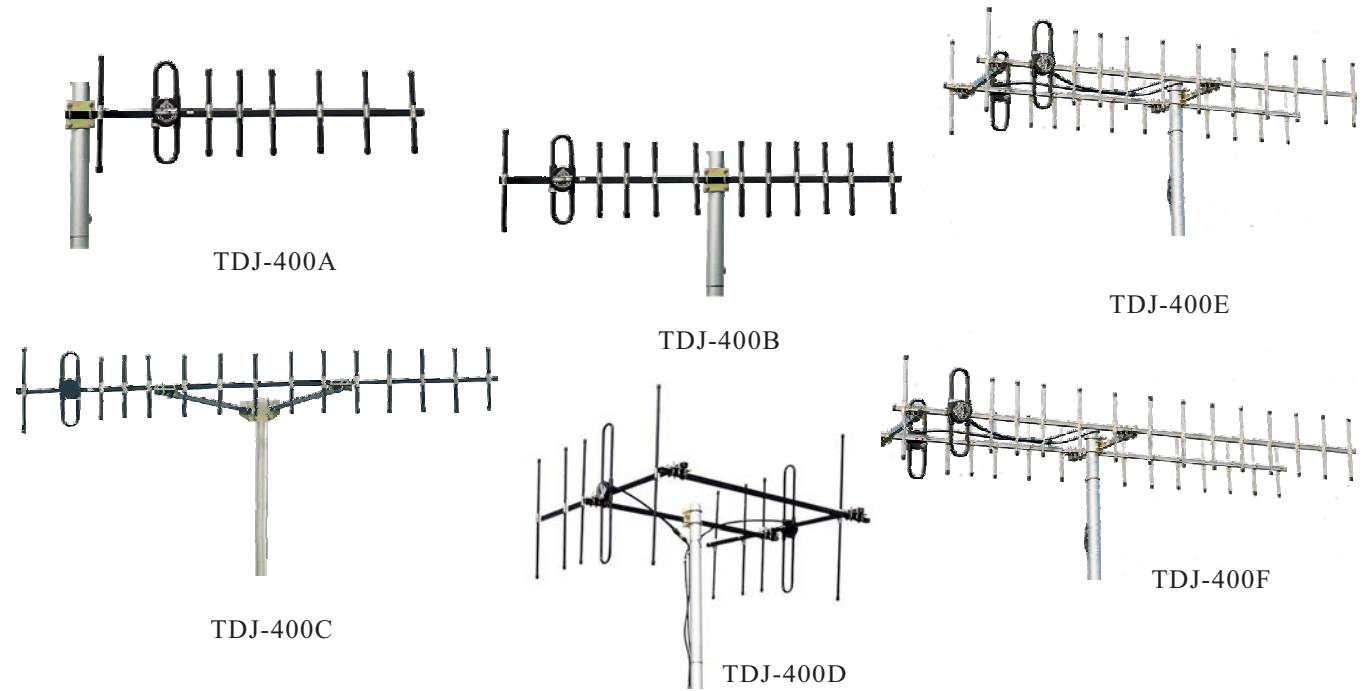


TQJ-400D



TQJ-400E

类别 Category	四环阵天线 FFDA	八环阵天线 EFDA	全向天线 Omni Antennas				
型号 Model	TQJ-400IA	TQJ-400IIA	TQJ-400A	TQJ-400B	TQJ-400C	TQJ-400D	TQJ-400E
频率范围 Frequency Range-MHz	400~480						
带宽 Bandwidth-MHz	16						
增益 Gain-dBi	全向Omni 9 定向Directional 12	全向Omni 12 定向Directional 15	6.5	7.8	7.8	10.2	8.5
垂直面波瓣宽度 Vertical Beamwidth-°	13	6.5	25	17	17	10	14.5
电压驻波比 VSWR	≤1.5						
标称阻抗 Nominal Impedance-Ω	50						
极化方式 Polarization	垂直 Vertical						
最大功率 Maximum Power-W	500		100				
长度 Length-m	2.5	5	1	1.5	1.7	4	2.6
重量 Weight-kg	8	15	1	1.2	2	3.5	2.5
抗风强度 Rated Wind Velocity-m/s	60						
接头型号 Connector	SL16或N座 UHF or N female						
备注 Remarks	/	分上下两段 Separated into two parts	铝合金或不锈钢制作 Made from Aluminum alloy or stainless steel	玻璃钢 Fiberglass	玻璃钢 分上下两段 Separated into two parts	玻璃钢 Fiberglass	



类别 Category	八木定向天线 Yagi Antennas					
单元数 Elements	8单元 8 elements	12单元 12 elements	15单元 15 elements	2排5单元 2 rows 5 elements	2排12单元 2 rows 12 elements	2排15单元 2 rows 15 elements
型号 Model	TDJ-400A	TDJ-400B	TDJ-400C	TDJ-400D	TDJ-400E	TDJ-400F
频率范围 Frequency Range-MHz	400~480			400~490	400~480	
带宽 Bandwidth-MHz	28			16	28	
增益 Gain-dBi	11.2	12	13	13.8	14.7	15.7
垂直面波瓣宽度 Vertical Beamwidth-°	40	32	30	40	32	30
水平面波瓣宽度 Horizontal Beamwidth-°	44	36	30	26	20	14
前后比 F/B Ratio-dB	16	18				
电压驻波比 VSWR	≤1.5					
标称阻抗 Nominal Impedance-Ω	50					
极化方式 Polarization	垂直或水平 Vertical or Horizontal			垂直 Vertical		
最大功率 Maximum Power-W	100					
尺寸 Dimensions-m	1.2	1.5	2	1.2	1.5	2
重量 Weight-kg	0.8	1	1.2	2.5	3.4	4
抗风强度 Rated Wind Velocity-m/s	60					
接头型号 Connector	SL16或N座 UHF or N female					



TDJ-400ACY8



TDJ-400ACZ6



TDJ-400Z8

类别 Category	八木定向天线 Yagi Antennas				
	5单元 5 elements	6单元 6 elements	8单元 8 elements	10单元 10 elements	12单元 12 elements
型号 Model	TDJ-400Z5 TDJ-400ACY5 TDJ-400ACZ5	TDJ-400Z6 TDJ-400ACY6 TDJ-400ACZ6	TDJ-400Z8 TDJ-400ACY8 TDJ-400ACZ8	TDJ-400Z10 TDJ-400ACY10 TDJ-400ACZ10	TDJ-400Z12 TDJ-400ACY12 TDJ-400ACZ12
频率范围 Frequency Range-MHz	400~410				
带宽 Bandwidth-MHz	10				
增益 Gain-dBi	9	10	11.2	12	12.5
垂直面波瓣宽度 Vertical Beamwidth-°	48	44	40	36	32
水平面波瓣宽度 Horizontal Beamwidth-°	54	50	48	40	36
前后比 F/B Ratio-dB	≥14	≥15	≥16	≥18	
电压驻波比 VSWR	≤1.5				
标称阻抗 Nominal Impedance-Ω	50				
极化方式 Polarization	垂直或水平 Vertical or Horizontal				
最大功率 Maximum Power-W	100				
长度 Length-cm	87	97	136	174	212
重量 Weight-g	天线的电缆长度不同时，天线重量有所不同 The weight will depend on the cable length				
接头型号 Connector	TNC头或BNC头 TNC male or BNC male				
备注 Remarks	长度仅供参考 Length is just for reference only				



TQJ-400E 8



TDJ-400ES 4



TDJ-400Z3 8

类别 Category	全向天线阵 Omni Antennas Array			栅状天线阵 Palisade Antennas Array			定向八木天线阵 Yagi Antennas Array		
型号 Model	TQJ-400E 8			TDJ-400ES 4			TDJ-400Z3 8		
频率范围 Frequency Range-MHz	400~410								
单元数 Elements	8			4			8		
增益 Gain-dBi	单元 Element	单元阵内 Element (with array)	阵列 Array	单元 Element	单元阵内 Element (with array)	阵列 Array	单元 Element	单元阵内 Element (with array)	阵列 Array
	8.5	9	9.5	7.5	13	18	10.5	10.1	18.7
水平面波瓣宽度 Horizontal Beamwidth-°	360	45	360	360	95	28	115	120	11.5
垂直面波瓣宽度 Vertical Beamwidth-°	17	15	10	17	15	14.5	32.5	32	33
电压驻波比 VSWR	≤1.5								
标称阻抗 Nominal Impedance-Ω	50								
极化方式 Polarization	垂直 Vertical								
最大功率 Maximum Power-W	100			100			150		
天线尺寸-m Dimensions-m	Φ1.0 2.6			2.5 0.8 0.2			2.93 0.545 1.025		
重量 Weight-kg	25			17			20		
抗风强度 Rated Wind Velocity-m/s	60			41.6			/		
接头型号 Connector	N座或用户指定 N female or Customization								
备注 Remarks	安装时, 天线底部必须位于同一高度。 The bottom of the antennas' must be mounted at the same level.			1. 两套TDJ-400ESx4组合成一副8单元智能天线阵; 2. 安装时, 天线底部必须与反射网平齐。 1. An 8-unit smart antenna array comprises two TDJ-400ESx4 antennas. 2. The bottom of antenna must be parallel to reflector.			/		



TQC-400BII



TQC-400CII



TQC-400DI



TQC-400DII



TQC-400I



TQC-400DIVI



类别 Category	车台天线 Mobile Antennas					
型号 Model	TQC-400BII	TQC-400CII	TQC-400DI	TQC-400DII	TQC-400I	TQC-400DIVI
频率范围 Frequency Range-MHz	400~480					410~430
带宽 Bandwidth-MHz	16					
增益 Gain-dBi	3.5	5	5.5			(长 Long) 5.5 (短 Short) 3
电压驻波比 VSWR	≤1.5					(长 Long) ≤1.8 (短 Short) ≤1.5
标称阻抗 Nominal Impedance-Ω	50					
极化方式 Polarization	垂直 Vertical					
最大功率 Maximum Power-W	100					
长度 Length-cm	50	90	110	110	110	110
重量 Weight-g	150	180	220	220	220	250
接头型号 Connector	SL16头 UHF male					3/8"NMO
备注 Remarks	底部弹簧防碰，配M90磁吸座。 Bottom spring which can prevent collision. Matches with M90 magnetic mount.	底部弹簧防碰，配M110大磁吸座。 Bottom spring which can prevent collision. Matches with M110 magnetic mount.	配M110大磁吸座。 Matches with M110 magnetic mount.	底部弹簧防碰，配M110大磁吸座。 Bottom spring which can prevent collision. Matches with M110 magnetic mount.	配M110大磁吸座。 Matches with M110 magnetic mount.	配3/8"NMO接头专用座。 Matches with dedicated mount for 3/8"NMO connector



类别 Category	车台天线 Mobile Antennas			火车车载天线 Mobile Antennas for Train		汽车防盗天线 Vehicle Alarm Antennas		
型号 Model	TQC-400S	TQC-400SI	TQC-400SII	TQC-400II	TQC-400IIS	TQC-400T	TQC-400TB	
频率范围 Frequency Range-MHz	400~480						420~440	
带宽 Bandwidth-MHz	16			15	10	16	5	
增益 Gain-dBi	3.2	3.6	5	2	2	2	2	
电压驻波比 VSWR	≤1.5				≤2.0		≤1.5	≤1.5
标称阻抗 Nominal Impedance-Ω	50							
极化方式 Polarization	垂直 Vertical							
最大功率 Maximum Power-W	100			25	50	30	50	
尺寸 Dimensions-cm	30	≤60	80	13	15	12	17.5	
重量 Weight-g	120	200	250	400	200	100	100	
抗风强度 Rated Wind Velocity-m/s	60							
接头型号 Connector	/			Q9头或用户指定 BNC male or Customization	SMA头或用户指定 SMA male or Customization	Q9头或用户指定 BNC male or Customization	SMA头或用户指定 SMA male or Customization	
备注 Remarks	配M80不锈钢磁吸座,引出电缆接头由用户指定。 Matches with M80 magnetic mount, the connector of the cable is customized.			安装于车尾 Installed on the rear of the train		/	车玻璃上粘贴安装 Stick on the glass of vehical	车玻璃上粘贴安装 Stick on the glass of vehical



TQX-400A TQX-400C TQX-400F TQX-400L TQX-400RS TQX-400FR TQX-400FS

类别 Category	终端天线 Terminal Antennas						
型号 Model	TQX-400A	TQX-400C	TQX-400F	TQX-400L	TQX-400RS	TQX-400FR	TQX-400FS
频率范围 Frequency Range-MHz	400~480						
带宽 Bandwidth-MHz	16						
增益 Gain-dBi	2.15	2	2	2	2.15	2.15	2
电压驻波比 VSWR	≤2						
标称阻抗 Nominal Impedance-Ω	50						
极化方式 Polarization	垂直 Vertical						
最大功率 Maximum Power-W	30						
长度 Length-mm	200	70	70	100	180	146	83
重量 Weight-g	30	20	20	20	30	100	10
接头型号 Connector	BNC或TNC(配TNC插头的, 在型号后加T) BNC or TNC (Matches with TNC connector, add T after model)			STUD头 STUD male	SMA头 SMA male	SMA座 SMA female	
备注 Remarks	鞭状 Whip shape	/	/	/	鞭状 Whip shape	/	



类别 Category	终端天线 Terminal Antennas					
型号 Model	TQX-450AB	TQX-450DI	TQX-450LG	TQX-450UI	TQX-450UIA	TQX-450UIB
频率范围 Frequency Range-MHz	400~480		450±5	450~500		
带宽 Bandwidth-MHz	16		10	20		
增益 Gain-dBi	5	2	2.5	2		
电压驻波比 VSWR	≤1.5	≤2	≤2.5	≤2		
标称阻抗 Nominal Impedance-Ω	50					
极化方式 Polarization	垂直 Vertical					
最大功率 Maximum Power-W	25	30	50	50		
长度 Length-mm	365	50	200	75	90	82
重量 Weight-g	70	20	42	50	112	50
接头型号 Connector	BNC头或用户指定 BNC male or customization	SMA头或用户指定 SMA male or customization	直角弯TNC头 TNC male	SMA头 SMA male	SMA头或用户指定 SMA male or customization	SMA头 SMA male
备注 Remarks	天线长度及重量仅供参考。 The length and the weight of the antenna are for reference only.	/	接头扭力范围： 0.4~1.7kg•cm Range of torque force of connector: 0.4~1.7kg•cm	/	/	/



TDJ-450ACY8



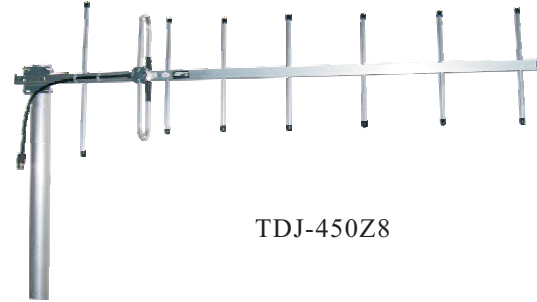
TDJ-450BKB



TQJ-450XTG



TDJ-450ACZ6

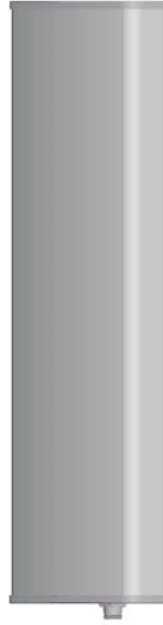


TDJ-450Z8

类别 Category	八木定向天线 Yagi Antennas					壁挂天线 Wall Mount Antenna	全向吸顶天线 Ceiling Mount Antenna
	5单元 5 elements	6单元 6 elements	8单元 8 elements	10单元 10 elements	12单元 12 elements		
型号 Model	TDJ-450Z5 TDJ-450ACY5 TDJ-450ACZ5	TDJ-450Z6 TDJ-450ACY6 TDJ-450ACZ6	TDJ-450Z8 TDJ-450ACY8 TDJ-450ACZ8	TDJ-450Z10 TDJ-450ACY10 TDJ-450ACZ10	TDJ-450Z12 TDJ-450ACY12 TDJ-450ACZ12	TDJ-450BKB	TQJ-450XTG
频率范围 Frequency Range-MHz	450~470						
带宽 Bandwidth-MHz	20						
增益 Gain-dBi	9	10	11.2	12	12.5	6	2
垂直面波瓣宽度 Vertical Beamwidth-°	48	44	40	36	32	120	/
水平面波瓣宽度 Horizontal Beamwidth-°	54	50	48	40	36	85	/
前后比 F/B Ratio-dB	≥14	≥15	≥16	≥18		≥15	/
电压驻波比 VSWR	≤1.5						≤2.0
标称阻抗 Nominal Impedance-Ω	50						
极化方式 Polarization	垂直或水平 Vertical or Horizontal					垂直 Vertical	
最大功率 Maximum Power-W	100					50	
尺寸 Dimensions-cm	72	88	121	154	170	24 23 5	Φ18 9
重量 Weight-g	天线的电缆长度不同时，天线重量有所不同 The weight will depend on the cable length					350	250
接头型号 Connector	TNC头或BNC头 TNC male or BNC male					N座 N female	
备注 Remarks	长度仅供参考 Length is just for reference only					壁挂安装 Wall mounting	螺母紧固安装 Fix with Nut



KBT90VP14-05RT0

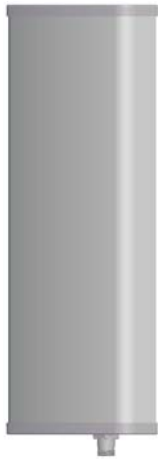


KBT65VP12-055RT0



KBT90VP11-055RT0

类别 Category	板状天线 Panel Antennas					
型号 Model	KBT90VP11-05RT0	KBT90VP14-05RT0	KBT65VP12-055RT0	KBT65VP15-055RT0	KBT90VP11-055RT0	KBT90VP14-055RT0
频率范围 Frequency Range-MHz	470~510			510~582		
电下倾角-° Electrical Downtilt-°	0					
增益 Gain-dBi	11	14	12	15	11	14
垂直面波瓣宽度 Vertical Beamwidth-°	32	15	32	15	32	15
水平面波瓣宽度 Horizontal Beamwidth-°	90	90	65	65	90	90
前后比 F/B Ratio-dB	≥20	≥20	≥20	≥22	≥20	≥20
电压驻波比 VSWR	≤1.5		≤1.8		≤1.5	
标称阻抗 Nominal Impedance-Ω	50					
极化方式 Polarization	垂直 Vertical					
最大功率 Maximum Power-W	500					
尺寸 Dimensions-mm	900 280 125	1800 280 125	830 320 80	1650 320 80	830 280 125	1650 280 125
重量 Weight-kg	6.8	12.2	5.8	11	6.4	10.5
抗风强度 Rated Wind Velocity-m/s	60					
接头型号 Connector	N座 N female					
安装件型号 Mounting kit	JM-VA	JM-900RZ	JM-VA	JM-900RZ	JM-VA	JM-900RZ



KBT65VP12-06RT0



KBT65VP15-06RT0



KBT90VP14-07RT0

类别 Category	板状天线 Panel Antennas							
型号 Model	KBT65VP12-06RT0	KBT65VP15-06RT0	KBT90VP11-06RT0	KBT90VP14-06RT0	KBT65VP12-07RT0	KBT65VP15-07RT0	KBT90VP11-07RT0	KBT90VP14-07RT0
频率范围 Frequency Range-MHz	582~678				678~798	678~806	678~798	678~798
电下倾角-° Electrical Downtilt-°	0							
增益 Gain-dBi	12	15	11	14	12	15	11	14
垂直面波瓣宽度 Vertical Beamwidth-°	32	15	32	15	32	14	32	14
水平面波瓣宽度 Horizontal Beamwidth-°	65	65	90	90	65	68	90	90
前后比 F/B Ratio-dB	≥20	≥22	≥20	≥20	≥20	≥22	≥20	≥20
电压驻波比 VSWR	≤1.5							
标称阻抗 Nominal Impedance-Ω	50							
极化方式 Polarization	垂直 Vertical							
最大功率 Maximum Power-W	500							
尺寸 Dimensions-mm	760 320 80	1520 320 80	760 280 85	1520 280 85	730 280 85	1430 280 125	730 280 85	1430 280 85
重量 Weight-kg	5.3	10.5	5.4	10	5	10.5	4.7	9
抗风强度 Rated Wind Velocity-m/s	60							
接头型号 Connector	N座 N female							
安装件型号 Mounting kit	JM-VA	JM-900RZ	JM-VA	JM-900RZ	JM-VA	JM-VA1	JM-VA	JM-VA1



TQJ-0408XTL



TQJ-0408XDC



TDJ-0408DS



TDJ-500Z9

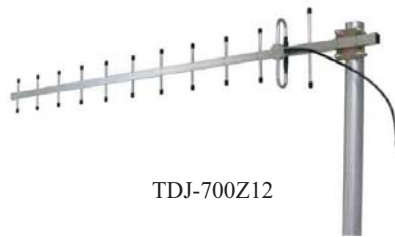


TDJ-500Z5

类别 Category	对数周期天线 LPDA Antenna	全向吸顶天线 Ceiling mount Antennas		八木定向天线 Yagi Antennas		
				12单元 12 elements	5单元 5 elements	9单元 9 elements
单元数 Elements						
型号 Model	TDJ-0408DS	TQJ-0408XDC	TQJ-0408XTL	TDJ-450Z12	TDJ-500Z5	TDJ-500Z9
频率范围 Frequency Range-MHz	400~800	470~800	480~820	450~470	480~590	510~560
带宽 Bandwidth-MHz	/	/	300	20	30	/
增益 Gain-dBi	11	3	2.15	12.5	9	11.5
垂直面波瓣宽度 Vertical Beamwidth-°	50	55	/	32	48	42
水平面波瓣宽度 Horizontal Beamwidth-°	65	360	/	36	54	46
前后比 F/B Ratio-dB	≥22	/	/	18	≥15	≥14
电压驻波比 VSWR	≤1.5	≤1.5	≤2.0	≤1.5	≤1.5	≤1.5
标称阻抗 Nominal Impedance-Ω	50					
极化方式 Polarization	垂直 Vertical			垂直或水平 Vertical or Horizontal	垂直 Vertical	
最大功率 Maximum Power-W	200	100	50	100	100	100
尺寸 Dimensions-cm	116 36	21.5 6.5 22	16 13.5 0.5	170	70	119
重量 Weight-kg	1.6	0.4	0.11	2	0.58	0.8
接头型号 Connector	N座或用户指定 N female or Customization	N座 N female	N座或用户指定 N female or Customization			
备注 Remarks	铝合金 Aluminum alloy	螺母板安装 Fixed with nut	/	/	铝合金 Aluminum alloy	铝合金 Aluminum alloy



TDJ-600Z8



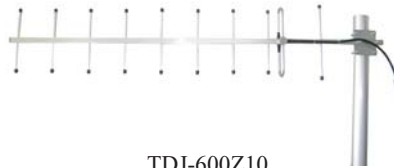
TDJ-700Z12



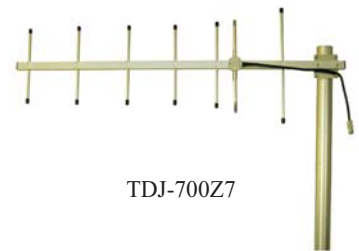
TDJ-750Z9H



TDJ-600Z5



TDJ-600Z10



TDJ-700Z7

类别 Category	八木定向天线 Yagi Antennas					
	5单元 5 elements	8单元 8 elements	10单元 10 elements	7单元 7 elements	12单元 12 elements	9单元 9 elements
型号 Model	TDJ-600Z5	TDJ-600Z8	TDJ-600Z10	TDJ-700Z7	TDJ-700Z12	TDJ-750Z9H
频率范围 Frequency Range-MHz	580~690	570~690	580~690	680~800	690~800	710~800
带宽 Bandwidth-MHz	40	30	40	50	60	/
增益 Gain-dBi	9	11.2	11.6	11	12	12.3
垂直面波瓣宽度 Vertical Beamwidth-°	48	40	36	45	32	42
水平面波瓣宽度 Horizontal Beamwidth-°	54	44	40	52	36	46
前后比 F/B Ratio-dB	≥15	≥16	≥18	/	≥18	≥16
电压驻波比 VSWR	≤1.5	≤1.5	≤1.5	≤1.5	≤1.5	≤1.5
标称阻抗 Nominal Impedance-Ω	50					
极化方式 Polarization	垂直或水平 Vertical or Horizontal		垂直 Vertical	垂直或水平 Vertical or Horizontal		水平 Horizontal
最大功率 Maximum Power-W	100	100	100	100	100	50
尺寸 Dimensions-cm	60	92	120	80	117	95
重量 Weight-kg	0.48	0.55	0.6	0.65	1.4	0.38
接头型号 Connector	N座或用户指定 N female or Customization					
备注 Remarks	铝合金 Aluminum alloy					

TDJ-450BKB
TDJ-700BKB

TDJ-500BKB-Y



TDJ-700BKM1



TQJ-400C



TQJ-400W9

类别 Category	壁挂天线 Wall Mount Antennas				玻璃钢天线 Fiberglass Antennas	
型号 Model	TDJ-450BKB	TDJ-500BKB-Y	TDJ-700BKB	TDJ-700BKM1	TQJ-400C	TQJ-400W9
频率范围 Frequency Range-MHz	450~470	500~590	650~800	700~800	400~480	380~490
带宽 Bandwidth-MHz	20	30	10	/	16	40
增益 Gain-dBi	6	6	8	7	7.8	7.2
垂直面波瓣宽度 Vertical Beamwidth-°	120	120	65	/	17	18
水平面波瓣宽度 Horizontal Beamwidth-°	85	85	90	/	360	360
前后比 F/B Ratio-dB	≥15	≥16	≥20	/	/	/
电压驻波比 VSWR	≤1.5	≤2	≤1.5	≤1.5	≤1.5	≤1.5
标称阻抗 Nominal Impedance-Ω	50					
极化方式 Polarization	垂直 Vertical					
最大功率 Maximum Power-W	50	50	50	50	100	250
尺寸 Dimensions-cm	24 23 5	24 23 5	25 22 6	21 18 4.4	180	Φ6.5 280
重量 Weight-kg	0.35	1.3	1.0	0.6	2.0	8.0
接头型号 Connector	N座 N female	N座或用户指定 N female or Customization	N座 N female	N座或用户指定 N female or Customization		
备注 Remarks	壁挂式安装 Wall Mounting				/	



TQJ-500AT5

TQJ-500C

TQJ-600B

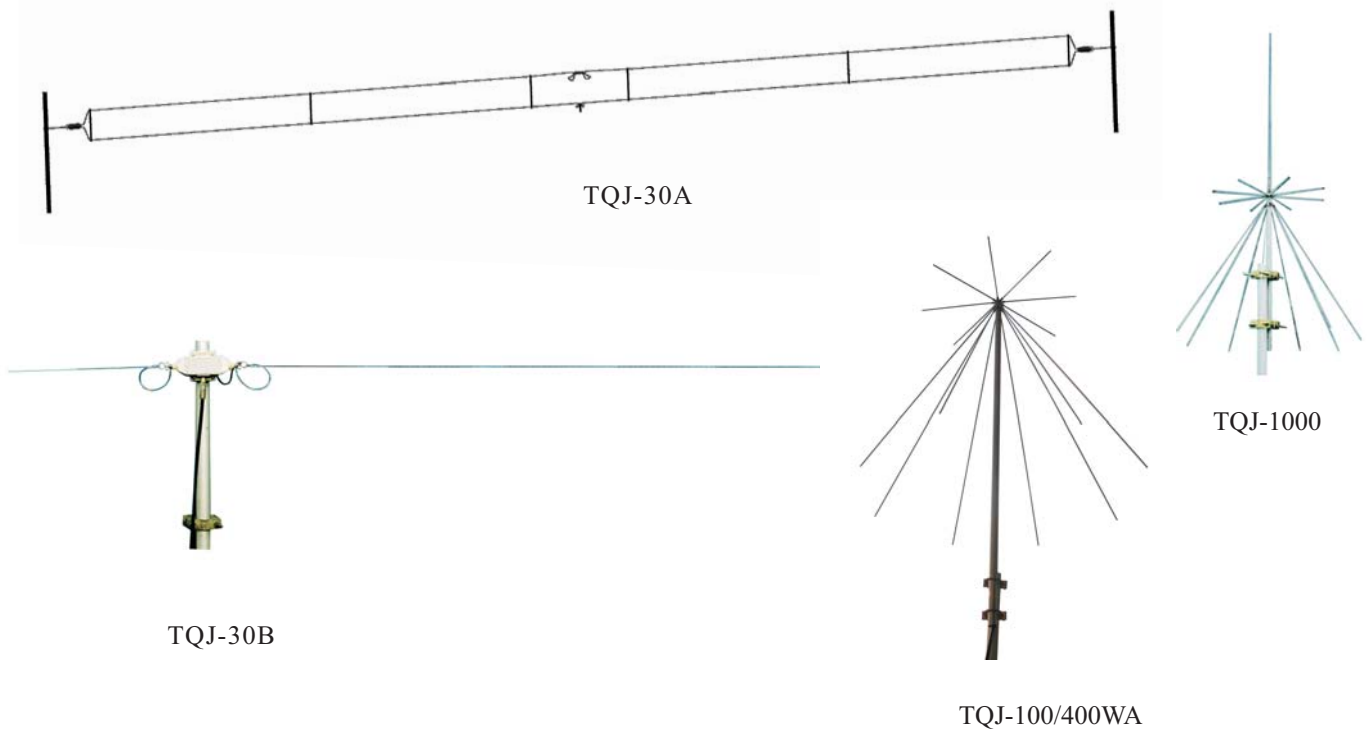
TQJ-600AT06

TQJ-700AT3

TQJ-700W6A

TQJ-750R8

类别 Category	玻璃钢天线 Fiberglass Antennas						
型号 Model	TQJ-500AT5	TQJ-500C	TQJ-600B	TQJ-600AT06	TQJ-700AT3	TQJ-700W6A	TQJ-750R8
频率范围 Frequency Range-MHz	500~590	500~600	580~690	600~690	680~790	700~790	740~870
带宽 Bandwidth-MHz	10	16	30	20	20	90	130
增益 Gain-dBi	5	7.2	8	6	3	5	8
垂直面波瓣宽度 Vertical Beamwidth-°	28	20	16	28	50	35	15
水平面波瓣宽度 Horizontal Beamwidth-°	360	360	360	360	360	360	360
电压驻波比 VSWR	≤1.5	≤1.5	≤1.5	≤1.5	≤1.5	≤1.5	≤1.5
标称阻抗 Nominal Impedance-Ω	50						
极化方式 Polarization	垂直 Vertical						
最大功率 Maximum Power-W	100	100	100	100	100	100	250
尺寸 Dimensions-cm	120	170	250	Φ2 88	45	75	Φ5.2 180
重量 Weight-kg	0.41	1.5	2.5	0.37	0.25	1.15	3.0
接头型号 Connector	N座 N female	N座或用户指定 N female or Customization	N座或用户指定 N female or Customization	N座 N female	N头或用户指定 N Male or Customization	N座 N female	N座或用户指定 N female or Customization



类别 Category	短波天线 HF Antennas			特宽带超短波天线 Ultra Wideband Antenna
型号 Model	TQJ-30A	TQJ-30B	TQJ-100/400WA	TQJ-1000
频率范围 Frequency Range-MHz	2~30	1.5~30	113~174/225~420	100~1000
带宽 Bandwidth-MHz	全波段 Full Band		/	900
增益 Gain-dBi	2.15		1~2.5	1~3.5
电压驻波比 VSWR	≤2.0(2~18MHz) ≤3.0(18~30MHz)	≤2.0	2.5	≤2.0
标称阻抗 Nominal Impedance-Ω	50			
极化方式 Polarization	水平 Horizontal		垂直 Vertical	
最大功率 Maximum Power-W	150		250	150
尺寸 Dimensions-m	长(Length)25	长(Length)15	高(Height)1.37 最大直径(Max. Diameter)0.94	长(Length)2
重量 Weight-kg	2.5	1.5	4	1
抗风强度 Rated Wind Velocity-m/s	60		/	60
接头型号 Connector	SL16座 UHF female		N座或用户指定 N female or Customization	SL16座 UHF female
备注 Remarks	水平对称振子 Horizontal dipole		盘锥天线 Discone antennas	



TGPS-1500



TGPS-1500B



TGPS-1500/0822x2A

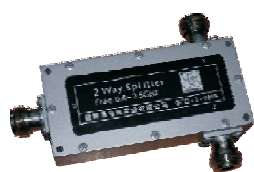


TGPS-1500/0822x2C

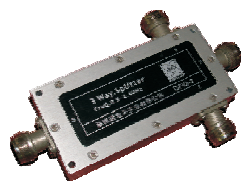


TGPS-1500/2600AVx2

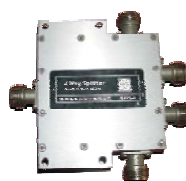
类别 Category	GPS卫星接收天线 GPS Satellite Receiving Antennas		GPS 组合天线 GPS Combined Antennas		
	TGPS-1500	TGPS-1500B	TGPS-1500/0822x2A	TGPS-1500/0822x2C	TGPS-1500/2600AVx2
型号 Model	TGPS-1500	TGPS-1500B	TGPS-1500/0822x2A	TGPS-1500/0822x2C	TGPS-1500/2600AVx2
频率范围 Frequency Range-MHz	1570~1580	1555.42~1595.42	1575.42 2 824~960/1710~2170	1575.42 2 806~960/1710~2170	1575 4 2500~2700
带宽 Bandwidth-MHz	10	20	/	/	/
增益 Gain-dBi	5±0.5	5±0.5	4.5dBic 2dBi	4.5dBic 2dBi	5±0.5 ≥5
电压驻波比 VSWR	≤1.5	≤2.0	≤2.5		≤1.5 ≤2
放大器放大系数 LNA Gain-dB	≥28	28±2/38±2	≥25 /	≥25 /	≥28 /
供电电压 Power Supply DC -V	3~5	3~5	3~5.5	3~5.5	3~5
标称阻抗 Nominal Impedance-Ω	50				
极化方式 Polarization	/	右旋圆极化 RHCP	/	/	右旋圆极化 RHCP
尺寸 Dimensions-mm	49 49 19	Φ94 134	Φ72 22	Φ72 22	总高(Total Height) 435
重量 Weight-g	115	290	148	170	500
接头型号 Connector	SMA头或客户指定 SMA male or customization				SMA头 SMA male TNC头 TNC male
安装方式 Mounting way	粘贴 Affixed	螺纹 Fixed with screw	磁吸式或双面胶粘贴 Magnetic mounting or Stick with twin adhesive	螺杆固定 Fixed with screw	螺母板安装 Fixed with nut



GFQ-2-0305



GFQ-3-0305



GFQ-4-0305



OHQ-0305

类别 Category	二功分器 2 Way Splitter	三功分器 3 Way Splitter	四功分器 4 Way Splitter
型号 Model	GFQ-2-0305	GFQ-3-0305	GFQ-4-0305
频率范围 Frequency Range-MHz	300~500		
插入损耗(含分配比) -dB Insertion loss (Including Dividing Loss)	≤3.5	≤5.4	≤6.6
隔离度 Isolation -dB	≥20		
电压驻波比 VSWR	≤1.4		
标称阻抗 Nominal Impedance-Ω	50		
承载功率 Maximum Power-W	20		
接头型号 Connector	N座 N female		
环境温度 Temperature Range-°C	-30~+60		
相对湿度 Relative Humidity-%	5~95		
尺寸 Dimensions-mm	117×83×21	135×83×21	115×112×21
重量 Weight-g	240	245	330

类别 Category	定向耦合器 Directional Coupler				
型号 Model	OHQ-5-0305	OHQ-7-0305	OHQ-10-0305	OHQ-15-0305	OHQ-20-0305
频率范围 Frequency Range-MHz	300~500				
耦合度 Coupling Level-dB	5	7	10	15	20
插入损耗(含分配比) -dB Insertion loss (Including Dividing Loss)	≤2.2	≤2.0	≤1.12	≤0.5	≤0.5
隔离度 Isolation -dB	≥20				
电压驻波比 VSWR	≤1.4				
标称阻抗 Nominal Impedance-Ω	50				
承载功率 Maximum Power-W	50				
接头型号 Connector	N座 N female				
环境温度 Temperature Range-°C	-30~+60				
相对湿度 Relative Humidity-%	5~95				
尺寸 Dimensions-mm	163×52×16				
重量 Weight-g	210				



GFQ-2-0309



GFQ-3-0309



GFQ-4-0309



OHQ-0309

类别 Category	二功分器 2 Way Splitter	三功分器 3 Way Splitter	四功分器 4 Way Splitter
型号 Model	GFQ-2-0309	GFQ-3-0309	GFQ-4-0309
频率范围 Frequency Range-MHz	350~370/806~866		
插入损耗(含分配比) -dB Insertion loss (Including Dividing Loss)	≤3.5	≤5.4	≤6.6
隔离度 Isolation -dB	≥20		≥12(350~370), ≥15(806~866)
电压驻波比 VSWR	≤1.5		
标称阻抗 Nominal Impedance-Ω	50		
承载功率 Maximum Power-W	50		
接头型号 Connector	N座 N female		
环境温度 Temperature Range-°C	-30~+60		
相对湿度 Relative Humidity-%	5~95		
尺寸 Dimensions-mm	115×96×21	115×96×21	115×112×21
重量 Weight-g	290	310	330

类别 Category	定向耦合器 Directional Coupler		
型号 Model	OHQ-6-0309	OHQ-10-0309	OHQ-15-0309
频率范围 Frequency Range-MHz	350~370/806~866		
耦合度 Coupling Level-dB	6 1	10 1.5	15 1.5
插入损耗(含分配比) -dB Insertion loss (Including Dividing Loss)	≤1.8	≤1.0	≤0.5
隔离度 Isolation -dB	≥20		
电压驻波比 VSWR	≤1.3		
标称阻抗 Nominal Impedance-Ω	50		
承载功率 Maximum Power-W	50		
接头型号 Connector	N座或用户指定 N female or customization		
环境温度 Temperature Range-°C	-30~+60		
相对湿度 Relative Humidity-%	5~95		
尺寸 Dimensions-mm	126×34×16		
重量 Weight-g	210		

日本、美国假负载 JAPAN,AMERICA DUMMY LOADS

- ◆日本DIAMOND（钻石牌）假负载 Japan DIAMOND Dummy Loads DL-30A,DL-1000
- ◆日本REVEX假负载 Japan REVEX Dummy Load L250
- ◆日本MFJ假负载 Japan MFJ Dummy Loads MFJ-260C,MFJ-264
- ◆美国TELEWAVE假负载 America TELEWAVE Dummy Loads TWL-100,TWL-150,TWL-300



型号 Model	DL-30A	DL-1000	L-250	MFJ-260C	MFJ-264	TWL-100	TEL-150	TWL-300
频率范围-MHz Frequency Range	DC~500			DC~650		DC~2500		
连续工作功率-W Continual Power	15	200	100	25	100	100	150	300
最大承受功率-W Max.Carry Power	100	1000		300	1500	可超载50%功率（2分钟） Can overload 50% power in 2 minutes		
标称阻抗-Ω Nominal Impedance	50							
电压驻波比 VSWR	≤1.15		≤1.1	≤1.15		≤1.05		
接口 Connector	M-P	M-J				N-J		
外形尺寸-mm Dimensions	30×75	100×100×255	67×77×220	64×64×178	76×76×203	85×185	165×89×165	115×210×260

日本、德国避雷器 JAPAN, GERMAN SURGE PROTECTORS

- ◆健博通避雷器 KBT Surge Protectors BL-35R, BL-35RP, BL-23R, BL-23RP, BL-23TP,BL-2400N,BL-2458N,BL-5500N
- ◆日本DIAMOND避雷器 Japan DIAMOND Surge Protectors CA-35RS, CA-23RS, CA-23RP
- ◆德国德利格能牌避雷器 German Telegartner Surge Protectors J010280002, J010280005



型号 Model	BL-35R	BL-35RP	BL-23R	BL-23RP	BL-23TP	BL-0825	BL-2400N	BL-2458N	BL-5500N	CA-35RS	CA-23RS	CA-23RP	J010280002	J010280005																
接头型号 Connector	M-J	M-J/M-P	N-J	N-J/N-P	N-J/N-P	7/16-M/F	N-J/N-P	N-J/N-P	N-J/N-P	M-J	N-J	N-J/N-P	N-J/N-J	N-J/N-P																
频率范围-MHz Frequency Range	DC~1000			2000~6000	800~2500	2200~2800	2000~6000	5000~6000	DC~1500	DC~2500		DC~2500																		
峰值功率-W Peak Power	400		200	200	200	500			400	200		300																		
放电开始电压-V Discharge Voltage	DC350		DC230		<20	/			DC350	DC230		DC230																		
标称阻抗-Ω Nominal Impedance	50																													
插入损耗-dB Insertion Loss	0.1			≤0.5	≤0.1	≤0.2			0.1																					
外形尺寸-mm Dimensions	68	4.25	20	74	4.25	20	65	31	25	77	69	32	75	50	25	65	25	23	75	32	25	68	4.5	20	74	4.5	20	59	2.5	25
重量-g Weight	90		100		130	330	200			90		100		150																

日本、美国驻波比功率表 JAPAN, AMERICA SWR POWER METERS

- ◆ 日本REVEX驻波比功率表 Japan REVEX SWR Power Meters W540, W560M, W570
- ◆ 日本DIAMOND (钻石牌) 驻波比功率表 Japan DIAMOND SWR Power Meters SX-200, SX-400, SX-600, SX-1000
- ◆ 美国TELEWAVE功率表 America TELEWAVE SWR Power Meters 44A, 44AP
- ◆ 美国BIRD (鸟牌) 功率表 America BIRD SWR Power Meters 4304A, 43
- ◆ 以上各驻波比功率表适用于测量及监测无线电话, 电台, BB机发射台的驻波比及正, 反向功率。

The above SWR power meters are applicable to measure and monitor of VSWR and forward-reverse power of radio telephone, broadcasting station and B.B. call transmitters.



REVEX W系列(W Series)



DIAMOND SX系列(SX Series)



TELEWAVE 44系列(44 Series)



BIRD 4304A

型号 Model	W540	W560M	W570	SX-200	SX-400	SX-600	SX-1000	44A	44AP	4304A	43	
频率范围-MHz Frequency Range	140~525	1.8~525	1.8~1300	1.8~200	140~525	S1:1.8~160 S2:140~525	S1:1.8~160 S2:430~1300	25~1000		25~1000	根据探头 不同而定	
功率量程-W Insertion Loss	4/20/200	3/20/200	5/20/200	5/20/200				5/15/50/150/500			/	
功率测量精度-% Power Meas. Accuracy	7	10		5W: 5 20W: 7.5 200W: 5	5W: 10 20W: 5 200W: 5	10		6	7(25~100MHz) 6(100~512MHz) 7(512~1000MHz)		5	
驻波比测定时最小 功率-W Min Power for SWR Measurement		S1: 2 S2: 3	S1: 2 S2: 4	1	4	S1: 1 S2: 4	S1: 1 S2: 2	/	带40dB衰 减输出	/		
插入损耗-dB Insertion Loss	0.1~0.3	S1: 0.2 S2: 0.3	S1: 0.2 S2: 0.15~0.3	0.15~0.2	0.1~0.3	S1: 0.2 S2: 0.3	S1: 0.2 S2: 0.15	0.1	0.1(25~512MHz) 0.15(512~1000MHz)		0.1	
标称阻抗-Ω Nominal Impedance	50											
接头型号 Connector	M-J	S1: M-J S2: N-J		M-J			S1: M-J S2: N-J	N-J				
外形尺寸-mm Dimensions	120×72×85			155×63×103				168×101×83		175×130×92		
重量-kg Weight	0.54	0.67	0.8	0.54	0.54	0.63	0.89	1.36	1.36	1.4		



Ax400

日本STANDARD接收机
JAPAN STANDARD RECEIVER

频率范围-MHz Frequency Range	0.1MHz~1.3GHz
声频输出 Acoustic Frequency Output	90mw(8Ω, 10%失真度)
灵敏度 Sensitivity	1.0~1.5 μV (调幅)
	0.5~1.0 μV (调幅)
天线接头 / 阻抗 Antenna Connector / Impedance	BNC/50Ω
工作标定电压 Working Nominal Voltage	3.0V(DC)
工作环境温度 Temperature Range	-10℃~60℃
外形尺寸 Dimensions	97 58 24mm
重量 Weight	200g



美国Cub频率计
AMERICA Cub FREQUENCY METER

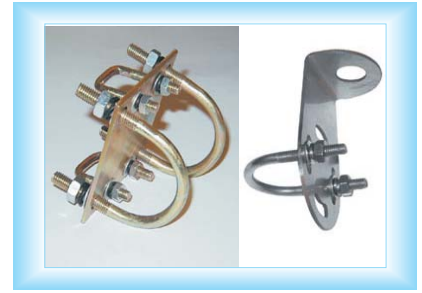
频率范围-MHz Frequency Range	1MHz~2.8GHz
最大输入 Maximum Input	+15dBm
输入灵敏度 Input Sensitivity	2~3mV(27~1000MHz)
	25~100mV(2~2.4GHz)
输入阻抗 Input Impedance	50Ω
频率显示分辨率 Freq. Display Resolution	10kHz/1KHz/100Hz/10Hz/1Hz(250MHz)
	10 KHz / 1 KHz / 100 Hz (2.8GHz)
外型尺寸 Dimensions	90 70 30mm
重量 Weight	200g



M80B 不锈钢磁吸座
Stainless Steel Magnet Mount



CTZ-CK1 穿孔座
Rooftop Mount Bracket



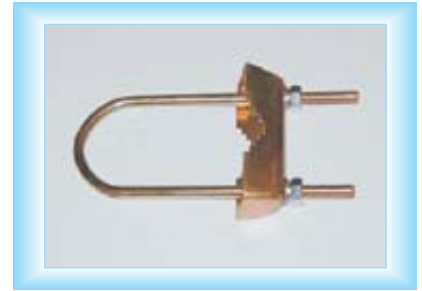
CTZ-2JG 双夹杆座 CTZ-1JG 夹杆座
Dual Mast Mount Mast Mount



M80 不锈钢磁吸座
Stainless Steel Magnet Mount



CTZ-CK2 穿孔座
Rooftop Mount Bracket



JM-1UI U型夹座
U Clamp



M90 磁吸座
Magnet Mount



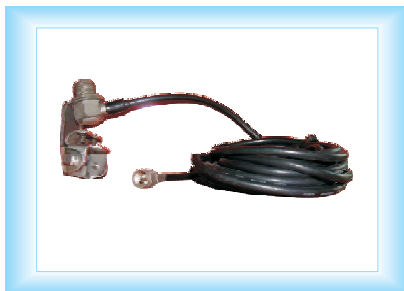
CTZ-1JW 夹尾座
Trunk Lid Mount



JM-DB 蝶形大夹码
Papilionaceous Big Clamp



M110 大磁吸座
Big Magnet Mount



CTZ-1JB 夹边座
Roof Gutter Mount



JM-1XJ 线夹
Clamp



M110N 大磁吸座
Big Magnet Mount



MG75 大磁吸座
Big Magnet Mount



CTZ-CK1NH 穿孔座
Rooftop Mount Bracket

接头 CONNECTORS			转换头 ADAPTORS
外形图 Contour	型号 Model	适配电缆 Matching Cable	外形图与型号 Contour and Model
	L16-J5, L16-K5	SYV-50-3 RG-58/U	 SL16/L16-JJ SL16/L16-KK
	L16-J27, L16-K27	SYV-50-5-1 RG-5/U	
	L16-J7, L16-K7	SYV-50-7-1 RG-8/U	
	L16-J9, L16-K9	SYV-50-9 RG-14/U	
	L16-J104, L16-K104	10D-FB	
	L16-J12, L16-K12	12D-FB	
	SL16-J5, SL16-K5	SYV-50-3 RG-58/U	 SL16/L16-JK SL16/L16-KJ
	SL16-J27, SL16-K27	SYV-50-5-1 RG-5/U	
	SL16-J7, SL16-K7	SYV-50-7-1 RG-8/U	
	SL16-J9, SL16-K9	SYV-50-9 RG-14/U	
	SL16-J104, SL16-K104	10D-FB	
	SL16-J12, SL16-K12	12D-FB	
	NJ-7/8	7/8" 馈管电缆 Corrugated cable	 SL16-JJ SL16-KK
	NP-1/2, NJ-1/2	1/2" 馈管电缆 Corrugated cable	 L16/Q9-JK SL16/Q9-JK
	MP-10DFB, NP-10DFB	10D-FB	
	MP-12DFB, NP-12DFB	12D-FB	
	MP-1/2	1/2" 馈管电缆 Corrugated cable	 N/TNC-JJ N-TNC-KJ
	Q9-J5	SYV-50-3 RG-58/U	 N/MiniUHF-KJ UHF/MiniUHF-KJ
	Q9-J27	SYV-50-5	
	TNC-J5	SYV-50-3 RG-58/U	 N/SMA-KK
	TNC-J27	SYV-50-5	
	SMA-J3, SMA-K3	SYV-50-2-1	 N/SMA-KK
	SMA-J5, SMA-K5	SYV-50-3 RG-58/U	
	MiniUHF-J5(M-C-J5)	SYV-50-3 RG-58/U	

公司荣誉 Reputation

Kenbotong Communication Ltd.



Hi-tech Enterprise Certificate



Enterprise of Observing Contract and Valuing Credit



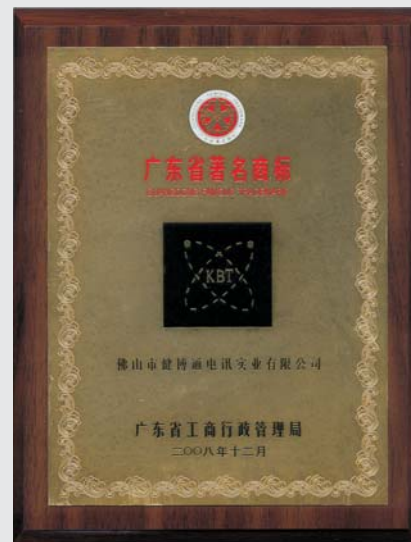
Guangdong Pivot New Product Certificate



Guangdong Private Technology Enterprise Credit



Guangdong Pivot New Product Certificate



Guangdong Famous Trademark Credit



健博通电讯实业有限公司
Kenbotong Communication Ltd.

地址: 广东省佛山市季华西路禅秀路2号健博通科技园

Add:No. 2,Chanxiu Road,Foshan City,Guangdong Province,China

电话(Tel): (86-757) 82126632 82126638 82219788

传真(Fax): (86-757) 82212072 88022808

Website:<http://www.kenbotong.com> E-mail:kbt@kenbotong.com

东北办(辽宁、吉林、黑龙江) 电话:024-88503505

北京办(北京、天津、河南) 电话: 010-67582196

西北办(陕西、宁夏、青海、甘肃、新疆、内蒙古) 电话: 029-68901892

华北办(山东、山西、河北) 电话: 0311-83830403

上海办(上海) 电话: 021-62739372

江苏办(江苏) 电话: 025-86618487

浙江办(浙江、安徽) 电话: 0571-88916231

湖北办(湖南、湖北) 电话: 027-59396158

福州办(福建) 电话: 0591-83189722

江西办(江西) 电话: 0791-6281216

四川办(四川) 电话: 028-85061169

深圳办(深圳、惠州、东莞) 电话: 0755-83670653

华南办(广东(除深圳、惠州、东莞外)) 电话: 0757-88022820

重庆办(重庆、贵州、云南、西藏) 电话: 023-68627180

KBT Communications Inc.

Tel:(1-408)7388 668 Fax:(1-408)7388 778

E-mail:sales@kbtusa.com

Kenbotong Communicatons Ltd.

Tel:852-3690 2330 Fax:852-3690 2660

E-mail:kbt@kenbotong.com

Commtel Ltd.(Israel Agent)

E-mail:simha@commtel.co.il

Wireless Data Solutions Pty Limited(Australia Agent)

E-mail:sales@WirelessData.com.au

PT Nirkabel Data Solusindo (Indonesia Agent)

E-mail:william_tio@nds.web.id

Delta Perkasa Electronics (Indonesia Agent)

E-mail:wibisono_hoesen@yahoo.com

Servicell Wireless Technologies Ltd. (America Agent)

E-mail:mcuellar@servicellwireless.com, servicellmc@aol.com

X-Concept Solutions Electronics Trading LLC.(UAE Agent)

E-mail: sales@xconcepts-me.com

Lambda Antennas S.L(Spanish Agent)

E-mail: lambda@inysa.es

Ucom Technologies (Pakistan Agent)

E-mail:sales@ucompk.com

Frontier Trading CO. (India Agent)

E-mail:frontier518@rediffmail.com